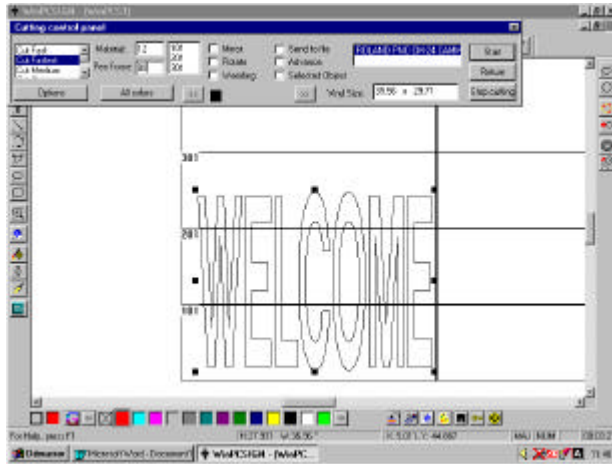


HOW TO CUT BY PANEL



If the entire panel fits within panel 101 plotting will start immediately.

NOTE: The only time you will be asked for panels is when the sign layout is larger than the normal panel limits originally set in the Plotter codes configuration, which is the largest size that can be plotted at one time. When the sign layout is smaller than the panel limit, plotting will commence automatically.

Panels are numbered on the **Material** option, sequentially in horizontal series, (101, 201, 301 etc.), from the bottom to the top of the sign layout. This value represent the maximum cutting width (vinyl) setting on the plotter this value must be enter by the user.

Depending on the type of plotter you may first choose the output vertically (101, 102 etc). After the first series of panels have been plotted (101, etc), the next level of panels (201, 301, 401 etc) can then be sent to plot.

If you choose **Advance** option you can select the entire panel before to start plotting

TIP: When a sign extends into two or more panels, it is sometimes convenient for the plotted panels to overlap slightly to make it easier to join them when the final sign is assembled.

To overlap on the Y axis (horizontal), go to **Options**, choose **Panel Overlap** and enter the desired value on this function or you can also plot the bottom panel first (101) then with the help of the keyboard arrow move your drawing up then you can cut panel 201.

If the sign exceeds two panels on the X (horizontal) Axis, it is advisable to verify the vinyl feed on your plotter.