

Chapter 5

Sources of graphics	45
Scanning parameters	45
Manual color vectorization	46
Manual B&W vectorization	47
Changing color resolution	47

Chapter 6

Changing speed and pressure parameters	30
How to delete registry key ?	49
Where to find HELP? Training ?	50
How return the cutter head to the start point (0,0) ?	50
How to check vinyl alignment before cutting ?	50
How to restore the text parameters after rotation ?	51
How to write vertical text ?	51
I can not see my drawing in the control panel	51, 52
How to Place Text on a Path ?	52
How to Place Text on a Circle ?	53
How to correct weird letter ?	52
I obtain ERROR FONT	54
Error message that the cutter cannot be initialized	54
I can not see the drawing in the cutting window	55
How to calibrate your cutter ?	56

Welcome

Welcome to WinPCSIGN !

Our congratulations on purchasing the WinPCSIGN software.

Founded in 1998, Sign Max Enterprises inc. has experienced tremendous growth and now plays a greater role in the programming world. From its modest beginnings, it has now blossomed into a company that is not only aware of modern trends in its field, but also sets the pace with its cutting edge products.

Our success stems from the efficiency of our internal structures; our goals are well defined, and we can rely on a competent , versatile and dynamic team of employees. It is because of these assets that we have been able to overcome various challenges and are now able to produce several types of software designed for industry and commerce.

It is with a great joy that we now introduce our latest offering: WinPCSIGN software. This high-tech product enables us to expand our horizons to include the general public to our market. Among our goals for this product, we intend to give the user a choice of tools that are effective and powerful and yet simple to use. WinPCSIGN software is ideal for drawing, the creation of graphics, retouching images and vinyl cutting (lettering, logos).

We are proud to welcome you to WinPCSIGN. We are eager to assist you on your journey to the wonderful world of computer-assisted drawing and graphic design.

Yvon Robert
president

Table of contents ...

Chapter 1

Quick install	3
Autorun is deactivated	7
Run the WinPCSIGN Basic program	7
Setup the cutter	8
Test your cutter	11
Cutting control panel options	11

Chapter 2

Starting out	13
Page size screen	14
Document bar	15
Tool bar	17
Fonts selection menu	18
Transformation window	19
Color palette	20, 21
Outline window	22, 23
Distortion window	24
Contour cut	25
Cutting control panel	26 to 30

Chapter 3

Making your first project	31
---------------------------	----

Chapter 4

How to reach local clipart logos ?	35, 36
How to reach web clipart ?	37
How to share logos ?	38
How to reach web video or forum ?	39
How to purchase logos ?	40
How to search a logo ?	40
How to create a file in Adobe Illustrator ?	42
How to create a file in Adobe Illustrator CS2 ?	43, 44

Notes

WinPCSIGN Basic 2009 Version Number : _____

Cutter's Model : _____

Connection type : _____

Serial Com Port (Com1, Com2, etc..) _____

Parallel Port (LPT1) and if available LPT2 _____

USB converter to Serial USB converter (Com1 to Com6) _____

USB Port USB Port (Configure USB) _____

Serial Com port used: Com1, Com2, Com3, Com4, Com5
and Com6 _____

USB driver used _____

Sign Max website www.signmax.us _____

Share logos and files www.universalscrapbook.com _____

Dealer information : _____

Chapter 1: QUICK INSTALL GUIDE - WinPCSIGN Basic

- 1) Be sure to close all open programs and insert the CD-ROM program into the CD-ROM or DVD drive. If the autorun is active you will see the following screen. If you wish to install WinPCSIGN Basic 2009 program click the button of your language.

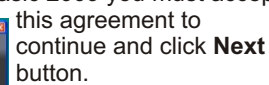
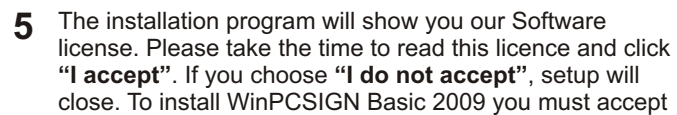
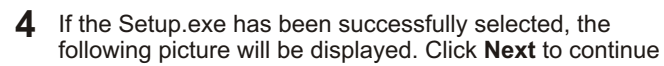


- 2) The following screen appears, click the button install WinPCSIGN.



If it doesn't start, the autorun is deactivated, jump to page 7.

- [illegible]



How to calibrate your cutter?

Procedure to calibrate a cutter using the WinPCSIGN to change the final size.

- 1) Use a piece of vinyl to cut a rectangle 12 inches of length by 8 inches of height.
- 2) Cut the rectangle using reduced speed and normal production pressure.
- 3) When ended, measure exactly the length and the width rectangle dimensions.
- 4) By default the vinyl cutter uses 1016 steps per inch or 40 steps by mm also some cutters uses 1000 steps per inch or 39,37 steps per mm, to bring correction on one or two axis make following calculation for each axis.
In calculations below use 40 or 39,37 according to your cutter (Creation is 40, RedSail is 39,37)

Factor for **X** Axis: $40 \times \text{Length from the drawing}$

Length measurement obtained from the cutting.

Factor for **Y** Axis: $40 \times \text{Height from the drawing}$

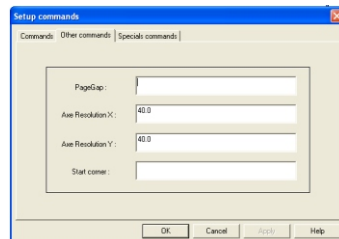
Height measurement obtained from the cutting.

Calculate using 2 decimals.

From WinPCSIGN software:

Setting Menu / Plotter Codes
Commands button
Other commands Tab

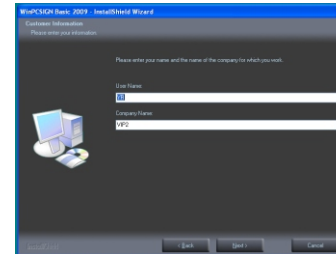
Resolution X (type appropriate factor using 2 decimals)



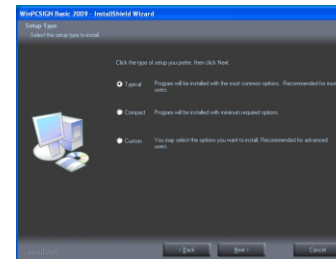
Resolution Y (type appropriate factor using 2 decimals)

Factor must be around 40.00 default value for most cutter because $40.00 = 1016$ steps per inch.
RedSail cutter use 39.37 because is 1000 steps per inch.

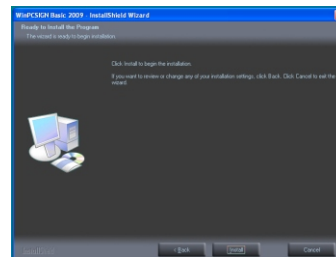
- 6 Please enter your name and the name of the company for which your work. You must fill the 2 information window.



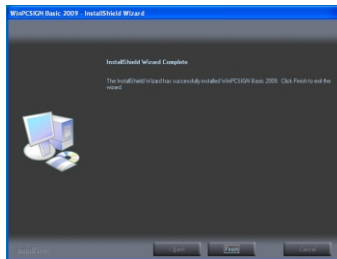
- 7 A full installation requires 452 meg of space on your hard disk, a personalized installation asks for much less space. Click the type of wished installation.



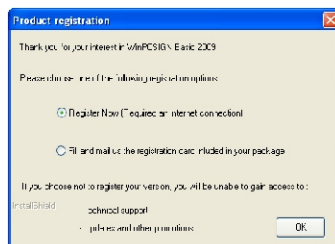
- 8 The installation program will suggest WinPCSIGN as a directory. To accept this directory click **Next**. If you want to install to a different directory, click **Change**.



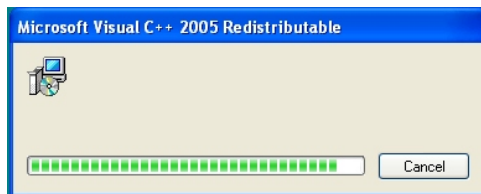
- 9 When the installation screen Complete, click Finish.



- 10 You can register your WinPCSIGN Basic 2009 software by using the registration card contained in the DVD case or if you have Internet proceed to an on-line registration. Click **OK** to continue.



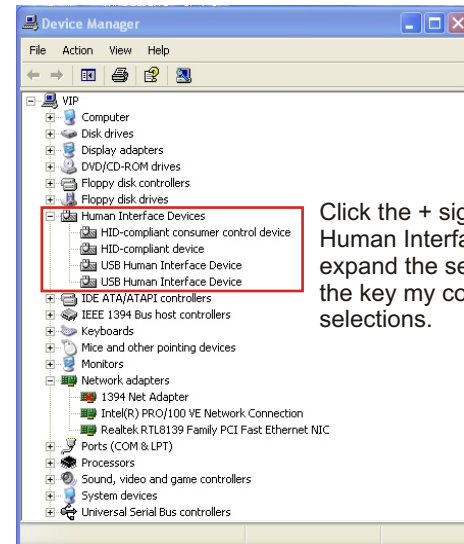
- 11 At the same time as the installation of the WinPCSIGN software we install Visual Redistributable and drivers.



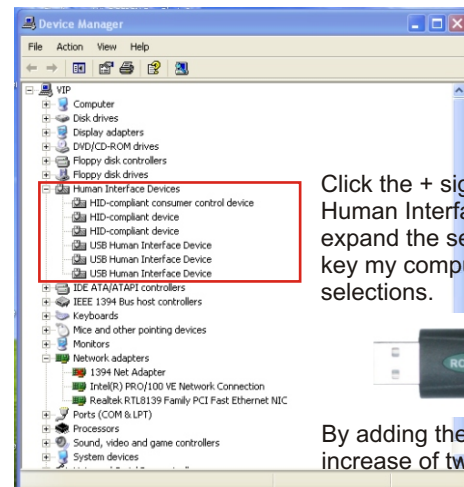
Congratulations, your installation is ended, Continue on the page 7 "Before to run your program"

RockKey2

From the Device Manager, (See page 9) you can verify if the key is installed, here is two screen showing absence and presence of the ROCKEY 2 key on a USB port.



Click the + sign next to Human Interface Devices to expand the selection, without the key my computer show 4 selections.



Click the + sign next to Human Interface Devices to expand the selection, with the key my computer show 6 selections.

By adding the key we note an increase of two selections.

Questions

I keep getting an error message that says that the cutter cannot be initialized-check the configuration.

You have to configure your cutter in the configuration menu by using the serial port Com1 to Com6 and the USB cable supplied with the cutter, certain cables have an end for the computer and an end for the cutter. Using USB port you must install USB driver found on program CD.

Setting Plotter codes
Check the active plotter and the port selected.

I obtain ERROR FONT

You have to erase of the Win PCSIGN directory the file
" Document .sav ".
C:\Program Files \ SignMAX \ WinPCSIGN Basic 14E

This can be taken from their web page, the edges are not straight and I can not see the drawing in the cutting window..

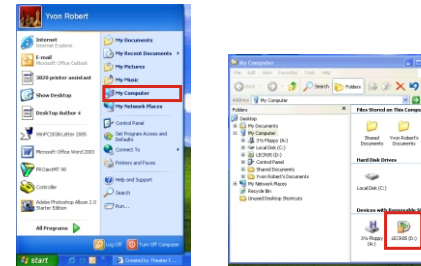
Karate Zoom 2X
Anti-aliasing

Images for Web are small and 96 or 72 dpi, they have no quality and must be digitized in the screen. Use fonts to reproduce them.

An image cannot be cut it does not contain vectors (lines, arcs or curves) it has to be vectorized or transformed into vectors. Save the image in BMP or JPG format to import in WinPCSIGN Basic

If it doesn't start, the autorun is deactivated, use one of the following 2 manners.

- A** Insert the CD-Rom Program in the CD-Rom drive, double click on **My Computer** icon, then from this dialog box double click the CD-Rom icon.



Start

MyComputer



Double click on your CD or DVD drive.

This action is going to start the presentation, to continue now installation.

OR

- B** - Click on **Start** in the toolbar and choose **Run**
Type **d:\Setup** in the dialog box and press Return.
The **D:** drive is where your CD-ROM is located. If, however, the letter for your CD-ROM drive is not **D**, type in the appropriate letter.
Follow on-screen instructions to finish installation, accept default by Be sure to close all open programs and insert the CD-ROM program into the CD-ROM or DVD drive.

Before to run the program:

- 1** To run the program and use a serial or a parallel connection you need one free USB port on your computer to install the security key (dongle). To use a USB cutter or a USB serial adapter you need a second free USB port.
1) Proceed to the installation of the **WinPCSIGN Basic** software when installation is ended leave the CD-Rom Basic Program in the CD drive if you need to install a USB cutter to find the appropriate USB driver.

2 Security key installation (dongle).

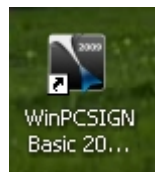
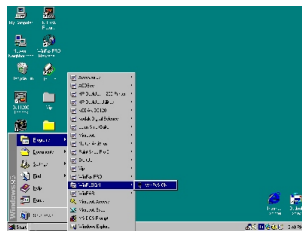


You can install anytime the security key, no driver to install or search, just place the security key (dongle) in a USB port. This can be done when you select USB key in software installation.

3 Run the program

To run the program click the WinPCSIGN icon on your desktop or use

Start / All Programs / WinPCSIGN

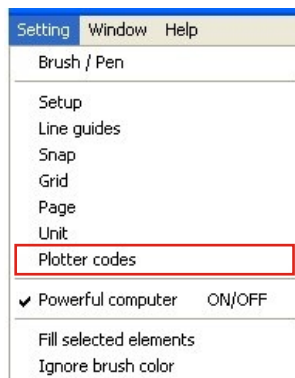


How to setup your cutter:

1) Before proceeding to the configuration this information will be necessary

- 1) Cutter brand name and model
- 2) Type of connection
- 3) USB cable or cable supplied with cutter
- 4) USB driver.

Run the **WinPCSIGN Basic** software and from the **Settings** menu, click on **Plotter Codes**



8

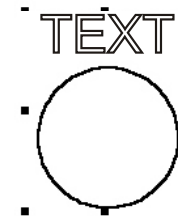
How to use function to fit a text on a circle ?



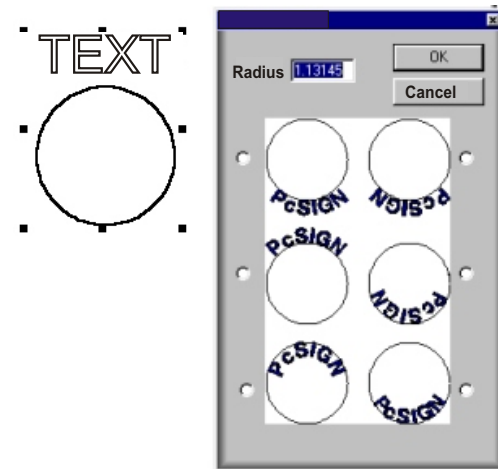
1) Draw a circle by using the tool encircle, not confuse with the tool ellipse.

2) Type your text and to adjust height and length

3) Select the text and the circle.



From the menu text use function place a text on a circle.

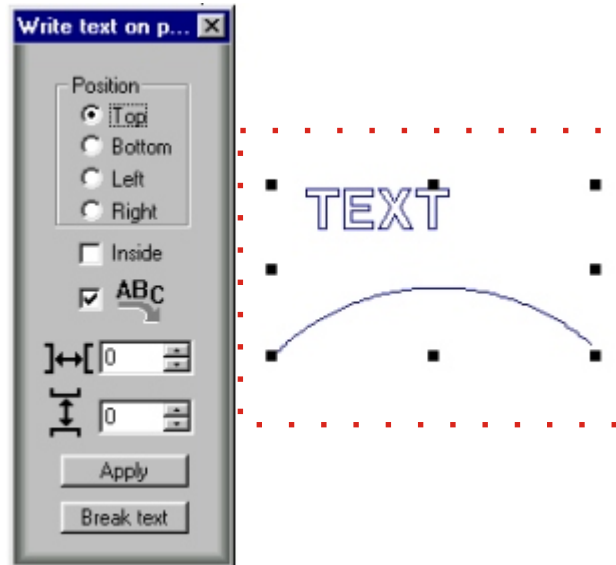


Adjust the circle radius, and choose the position of the text on the circle, click the button OK

53

How to Place Text on a Path?

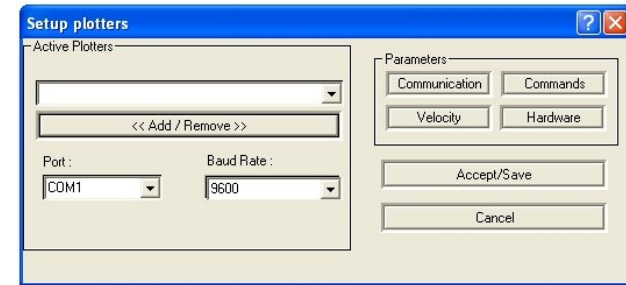
From the Text Menu use function Place Text on a Path after selecting both the text and the path.



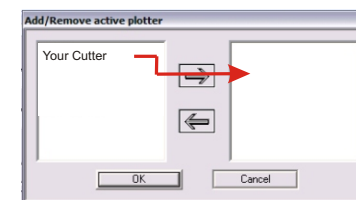
How to correct weird letter ?



The blade offset value is set wrong. See page 7

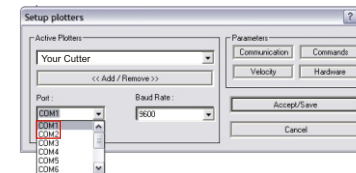


Then from the setup plotter window click on **Add/Remove**. Locate your plotter model, select it and click on the arrow



to place the plotter in the visualization windows to the right. Finally click **OK** and **Accept/Save**

Serial cable connection.

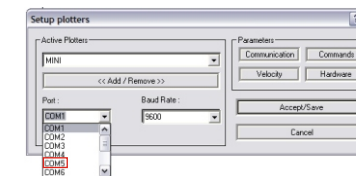


If you use a serial cable between cutter and computer, use the Com port available, normally is Com1 or Com2.

After Com port selection, click on **Accept/Save** button.

USB Serial adapter connection.

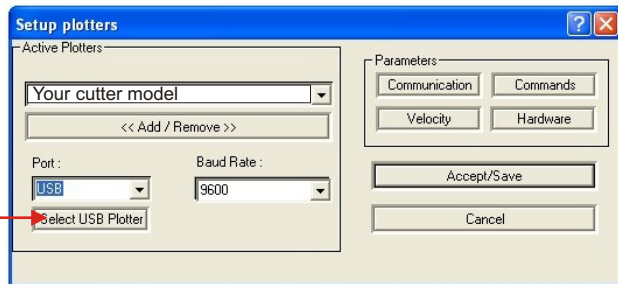
Install the USB Serial adapter to the computer, connect the serial cable to the adapter and the cutter.



Turn the cutter power ON, Windows detects a new peripheral, it will generally ask for the driver. This driver is provided with your adapter.

Use the Com port available previously identified in the Device Manager. If you use a USB serial converter check port in the Device Manager and configure with this port. Normally is Com5.

USB cable connection.



If your cutter is configured to USB port, click the button to select the proper USB printer driver installed.



Click the OK button to close the USB port selection window and click the Accept/Save button.

If the printer driver does not appear in the list.

- 1) Close the window "Select USB plotter" by clicking the "Cancel" button or "X"
- 2) Close the window "Setup plotters" by clicking the "Cancel" button or "X"

- a) Connect the computer and the cutter using the USB cable, turn the cutter power On.
- b) If Windows detects a new peripheral it will generally ask for the printer driver; this driver is provided with your cutter.
- c) Install the driver. If the driver is already installed, Windows will complete the installation.
- d) Begin again the cutter configuration procedure, this time the USB driver will be visible select it.

Questions ?

How to restore the text parameters after rotation or writing on a circle or on a path.

From the Text Menu select Clear text transformation

How to write vertical text.

Use the Fast Writing function (CTRL T), in the box - type the first letter and press Enter, type the second letter and press Enter etc.... for the other letters. Justify in the centre. Choose height and click the button OK.
You can change the font, the height and the spacing between letters by using visual text spacing or mathematical spacing between lines using text spacing.

I can not see my drawing in the cutting control panel or objects are missing.

If an object does not appear in the cutting control panel: the lines are white or you have an **image** - only vector objects are seen by the cutting control panel. To display a vector object containing white lines you can use wire frame function.

You can also right click on the object to see its properties. Check to see if the object is an image or a cuttable vector object.

In the cutting control panel images will not display and will not cut. You must convert them to vector objects in order to cut them.

Questions ?

Where to find help and training on the WinPCSIGN software.

Multimedia training on the blue CD-Rom. It contains more than 100 movies.

A complete WinPCSIGN software manual in PDF format on the CD-Rom.

An E-Book software manual on CD-Rom. It is accessible from the Start Menu. Programs, WinPCSIGN Basic, Tools

Paper booklet accompanying the software cd's.

The Help Menu in the WinPCSIGN software.

On the Internet at www.signmax.us & www.vipstudio.com

E-mail support signmax@signmax.us
Vip@vipstudio.com

How return the cutter head to the origin Or start point (0,0)

In the cutting control panel uncheck the box **Advance** after cut.

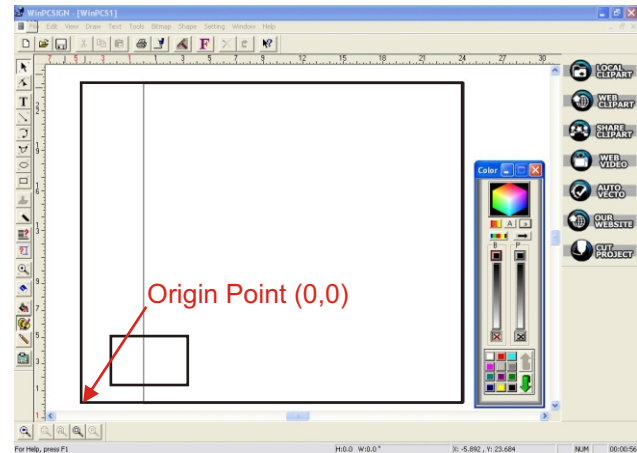
How to check vinyl alignment before cutting.

From cutting control panel, click the white vinyl align button. The vinyl cutter will unwind the quantity of necessary material and will return to the origin point

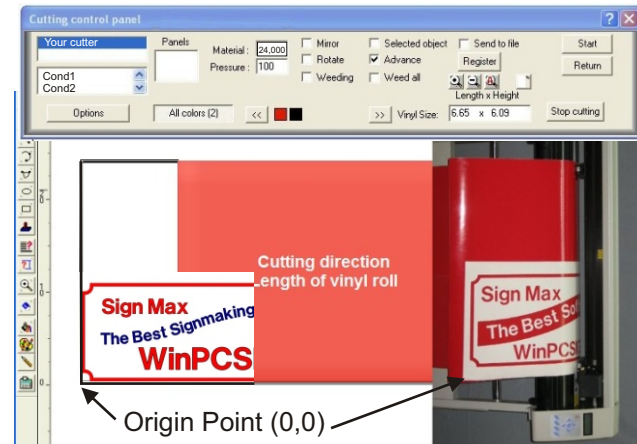
To test the equipment:

Draw a square or a rectangle on the working page.

Click on the **Cutting** icon, this will open the **Cutting Control Panel** Press the **Start** button.

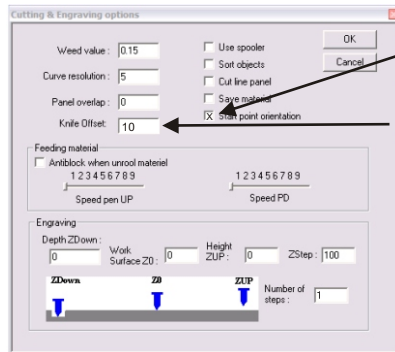


Draw rectangle near left hand bottom corner this represent the origin point (0,0)



To enhance your cutting quality:

Click the **Options** button in the **Cutting Control Panel**
Enter a value 0.125 or 0.150 for the weed value
Also checkmark the box for Start Point Orientation.



Checkmark the blade orientation function.



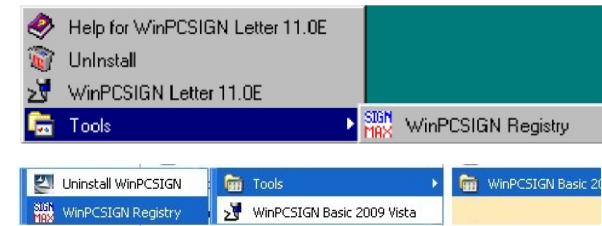
Click OK button and exit from Cutting Control Panel so that the changes take effect.

The blade offset function allows you to compensate for the slope of the edge of the blade. The advantage of choosing a good offset value is that letters have square corners and are easier to weed because the vinyl and adhesive will be totally cut.

How to delete the WinPCSIGN Basic registry key

Removing a program is sometimes useless, unless you erase the registry keys. To reset the original settings use the regdelete utility.

To use this utility program- Go to Start, Programs, WinPCSIGN Basic, RegDelete

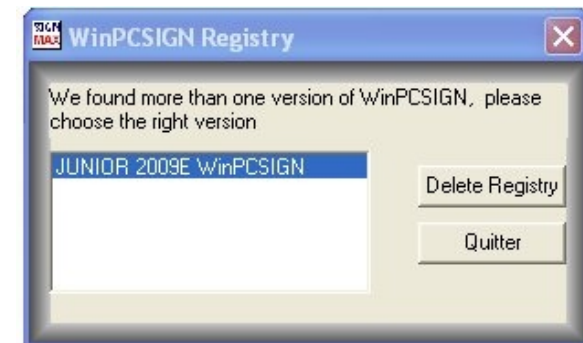


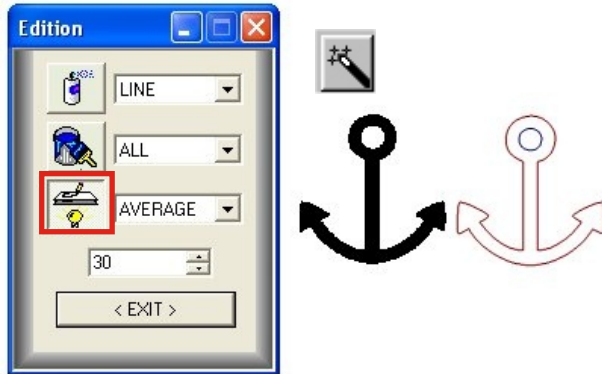
Attention: This program erases only the WinPCSIGN Basic register key and not the program.

You can also use Windows Explorer and from C:/Programs Files/SignMAX/WinPCSIGN Basic 2009 found RegDelete Program and double click on it. (Also on the original CD Program)

**SIGN
MAX** RegDelete.exe

Registry key removal program





Using the simplify paths function a few times will help reduce the number of unwanted points making editing easier.

When finished you can edit or modify individual paths by using the drawing tools.

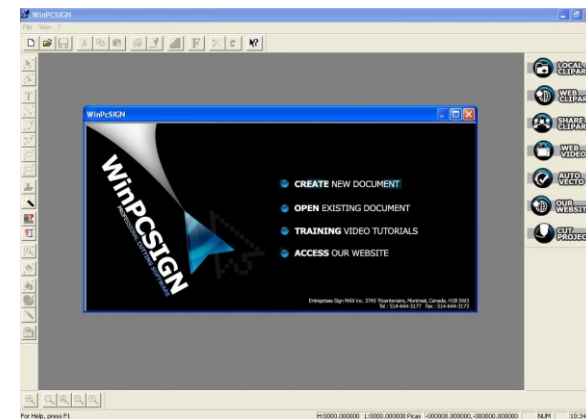
Chapter 2: Starting out

Your WinPCSIGN Basic 2009 software is now installed and you are impatient to discover the many capabilities of the software. Your creative energy overflows, but you will need a certain time to get acquainted with the software and the equipment. The more you will explore the possibilities and functions, the easier it will be for you to create and realize your future projects.



After the WinPCSIGN Basic 2009 software installation a new icon will be created on the Windows desktop, to run the program double click the WinPCSIGN Basic 2009 icon.

A screen identical to this will appear:



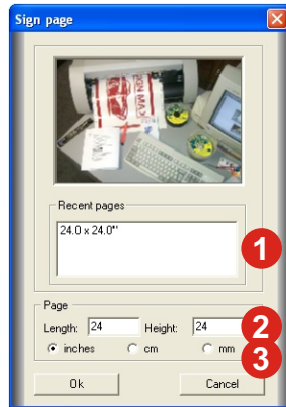
You can:

- A) **Create** a new blank document
- B) **Open** an existing document
- C) **Training** multi-media tutorial
- D) **Access** our website

Create a new blank document

A new screen appears "Page Size"

Now you can select a page size template, create a page corresponding to your needs and select the desired working unity.

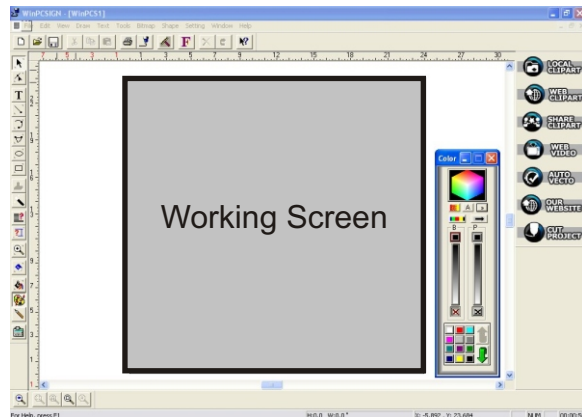


1.. Page Size template

2.. Page configuration

3.. Working unity selection

Select a Page Size and click "Ok"

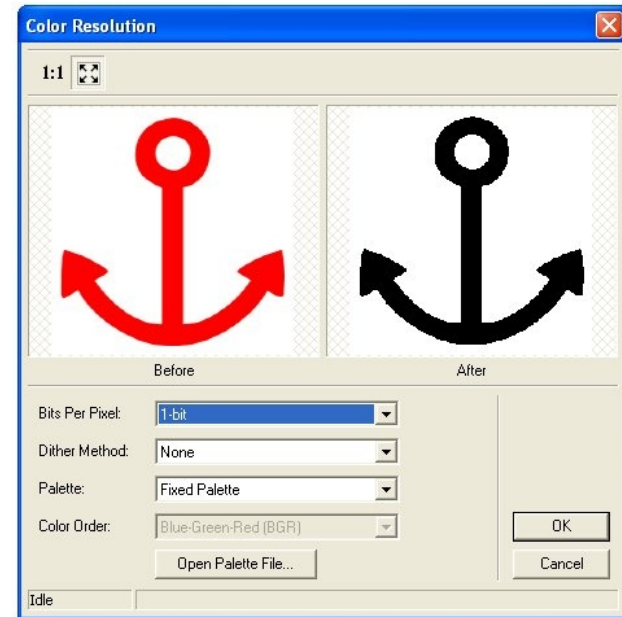


The "working screen" opens. The rectangle represents your page according to the selected dimension and orientation. You will also see the tools, the color palette, a function bar and, on top of your screen, the document bar.

Using the simplify paths function a few times will help reduce the number of unwanted points making editing easier.

When finished you can edit or modify individual paths by using the drawing tools.

From the **Bitmap** menu, **Color**, **Color resolution** this open the Color Resolution window.



When you have a 1 bit black and white image, use the magic wand, click on each path to be converted.

Use the magic wand and click each part of the image you wish to convert to a vectorized (cuttable) object. When your finished, select all vectorized objects and use the simplify paths function to help remove unwanted points.

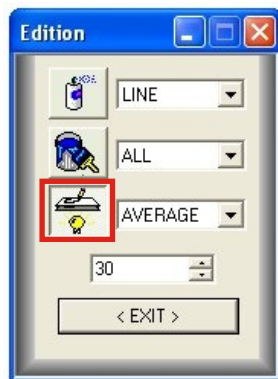
WinPCSign Basic 2009 Software has a manual image color conversion and a manual black and white image conversion.

Images can be digitized in colour or in black and white (B&W). It doesn't much matter the digitalization WinPCSIGN Basic is capable of transforming a bitmap image into vectors.

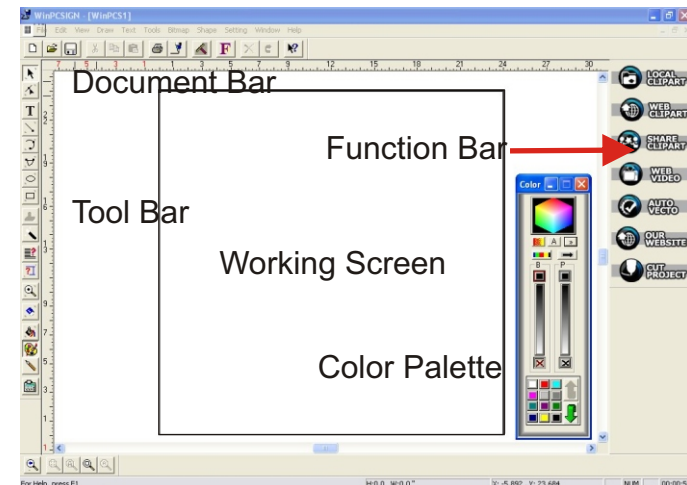
If you have a color image or a black & white image in 24 bits, you can use the function "Change Resolution" to reduce the image to 1 bit per pixel. Make sure you set *Dithering Pattern to None*



Use the magic wand and click each part of the image you wish to convert to a vectorized (cuttable) object. When your finished, select all vectorized objects and use the simplify paths function to help remove unwanted points.



Overview of Basic Commands



Document Bar



New Documents: Open a new page (Ctrl + N)



Open: Select and open a document (Ctrl + O)



Save: Save a document (Ctrl + S)



Cut: Cut selected element(s) (Ctrl + X)

Document Bar suite



Copy: Make a copy of selected element(s) (Ctrl + C)



Paste: Insert into your page the last element(s) cut or copied (Ctrl + V)



Print: Print your design on the selected printer.



Cut: Open the cutting control panel (F10)



Redraw: Clean (Refresh) your working screen



Fonts: Open the fonts menu window.



Undo: Undo the last action(s) you did. (Ctrl + Z)



Redo: Redo the last action(s) you undid. (Ctrl + R)

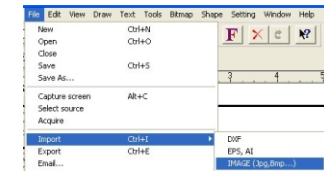


Help: Open help

Chapter 5: Graphics source and Vectorization.

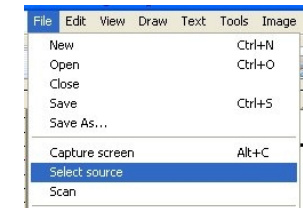
- 1- Import from a saved graphics file.
- 2- Copy and paste graphics.
- 3- Scanning graphics.

1- You can import graphics into you WinPCSIGN Basic 2009 software by using File Menu, Import, Image. (Ctrl + I)



2- From another program showing a graphic on the screen, or from a Web site, you can use the right mouse button to copy the selected graphic and paste it afterward on your WinPCSIGN Basic 2009 working screen.. Use the right mouse button to copy or paste a graphic or use the keyboard (Ctrl + C) to copy and (Ctrl + V) to paste.

- 3- From a scanner, place your graphic in the scanner.
 - a) From the file menu, select the source and locate your scanner you will only need to do this the first time you use a scanner.
 - b) Select File and select Scan
 - c) Your scanner menu should appear.

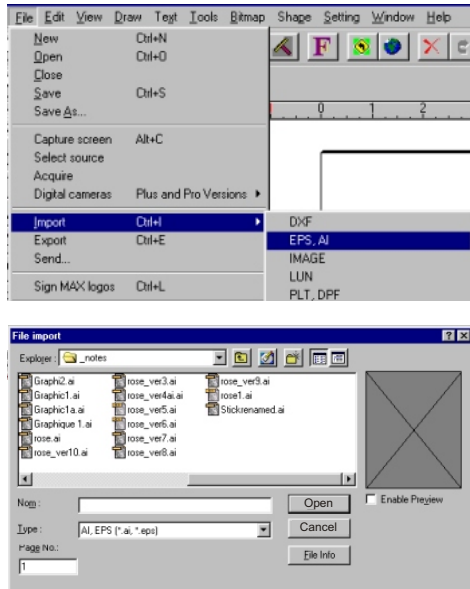


Digitize your image by using the scanner functions The larger the image the better the conversion will be. You can digitize in black & white 1 bit per pixel, or digitize in color.

Parameters to use :

- Black/White drawing or color drawing (Solid colors only)
- Enlarge the selected zone as much as possible - 200 to 800 % works well.
- Digitize using 200 or 300 dpi

From Win PCSIGN import a file format AI or EPS by using function File import File (EPS,AI)



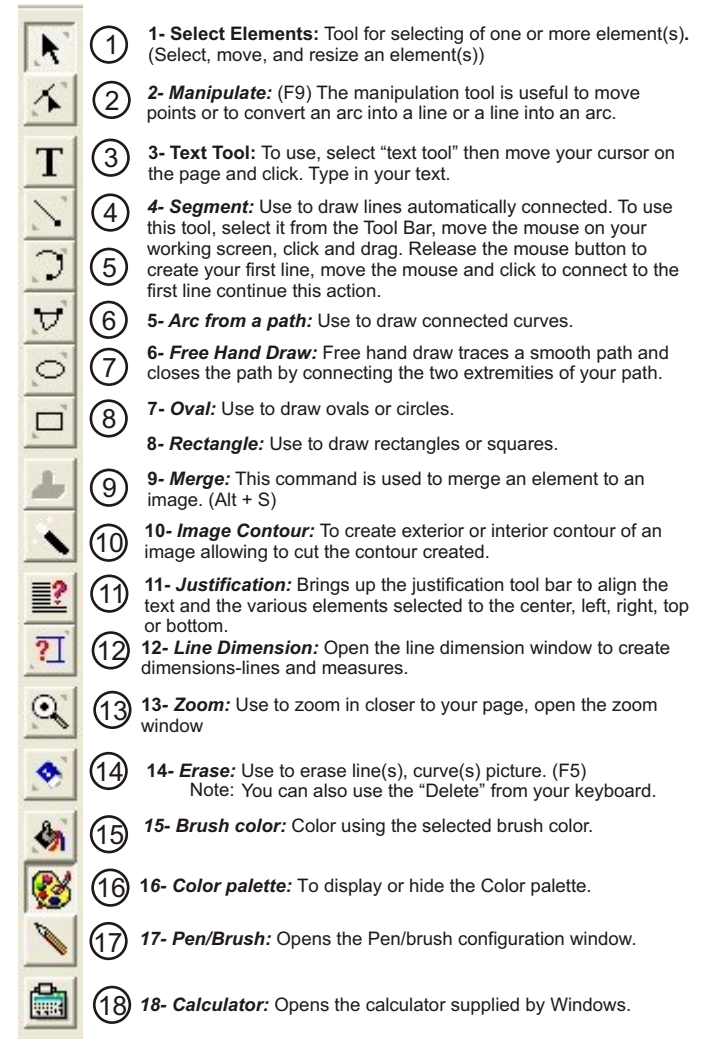
From the directory containing your file, select the file to be imported, if its in vector format, click Vector button. If its in raster(photos) format click bitmap



If round letters or circles seem segmented, from the *shape menu* use function *break all* and *redraw* the screen. This will restore the curvature of letters. If segments or lines are roamed use the *move point tool* and double to click objects to be corrected



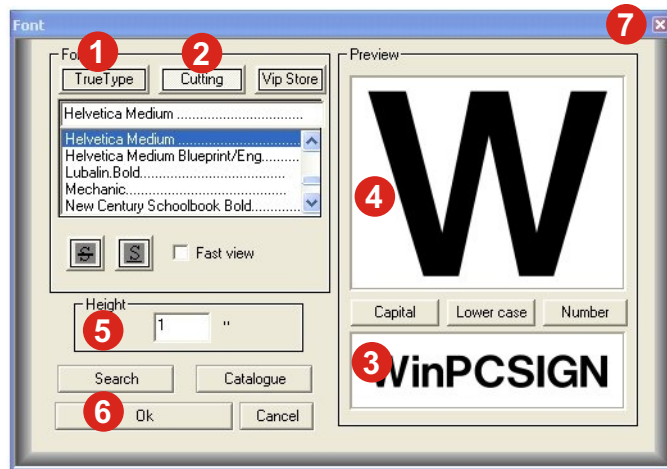
Tool Bar



The most-often used functions:

Font selection:

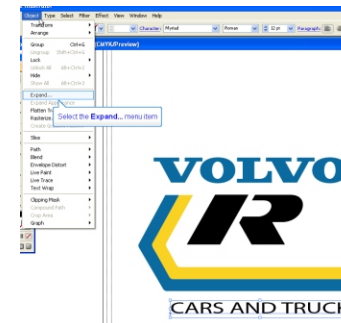
Click the Fonts button icon on the document bar to open the Fonts Menu window.



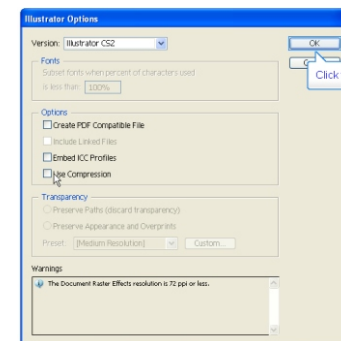
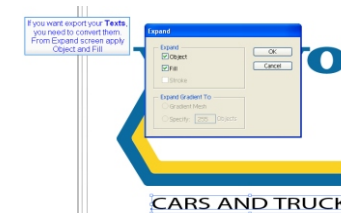
- 1 **TrueType fonts:** Click the TrueType button to view and select all TrueType fonts installed on your computer.
- 2 **Sign Max Cutting fonts:** Click the Cutting button to view and access all Sign Max fonts especially made for vinyl sign cutting.
- 3 To preview what your text will look like in different fonts. You can type your text or you can use the selection tool to select a text before opening the Text & Fonts window.
- 4 **Font Preview:** Allows to display the selected font under capitals letters, lower cases letters and numbers.
- 5 **Font Height:** You can change the height of your text in the Height window. The height of the font is defined with the capital letter N.
- 6 **OK:** Applies changes to the text and closes the font window.
- 7 **X:** Close the font windows without applying changes to the text.

How to create a file in Adobe Illustrator CS2 and to import in WinPCSIGN software.

- 1) Open the file created by Adobe Illustrator CS2
- 2) Select the text to be exported
- 3) Click the menu OBJECT, select EXPAND



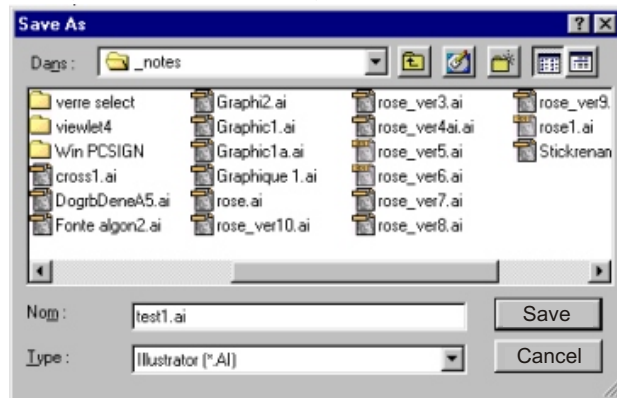
EXPAND menu display, select OBJECT AND FILL and click the OK button.



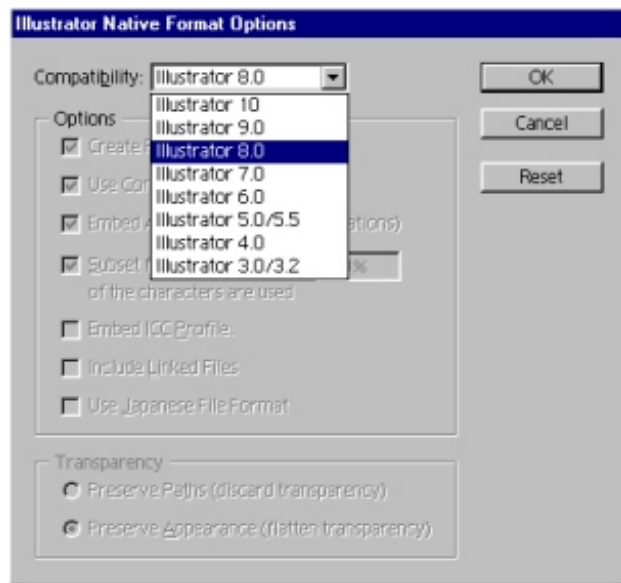
Now you are ready to save your file in Ai format.
File / Save as
Deactivate all elements of Options.
Click the OK button.
You created a Ai file import this file in your WinPCSIGN.
See next page "How to import in WinPCSIGN"

How to create a file in Adobe Illustrator and to import in WinPCSIGN Basic.

Save your Illustrator file using Save or Save as ...



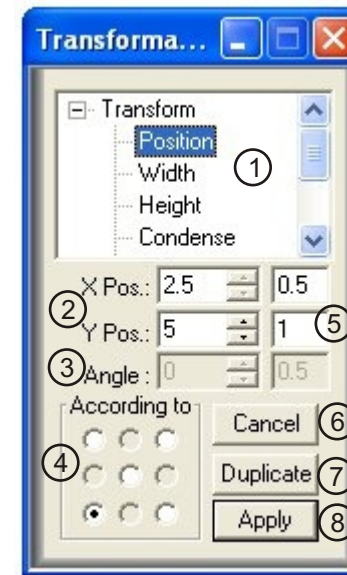
Save your file in Illustrator version 8 or less. If you save in version 9 or 10 uncheck the boxes creation of a compatible PDF file and do not use the compression file.



Transformation window

The transformation tool is specially used to modify or to compare position, height, width, condensation, slant, mirror effects, rotation and engraving functions of any selected objects or groups. This exceptional tool will facilitate your work.

Press the letter H from your keyboard.



1. Transform: Indicates which tool is selected and used.

2. Position as X and Y: Represents the position of the selected object. On the photo we see a position giving to X a position of 2.5 and giving to Y a position of 5. The left bottom screen corner represents the position 0,0. You can modify these values by typing the desired values in the window. Scroll buttons can be used.

3. Angle: This represents the rotation angle in degrees that you wish to rotate an object or the inclination (slant) angle.

4. According to: You can select the rotation axis or the mirror plan to make a transformation.

5. Increments: This represents a **value** that you wish to add or to decrease the position X and Y, the width, the height, the condensation, the inclination (slant) angle, the rotation angle in degrees and the engraving.

6. Cancel: This cancels (undo) the last action.

7. Duplicate: Before selecting "Apply" you can select "Duplicate" to create a copy of any selected object or groups.

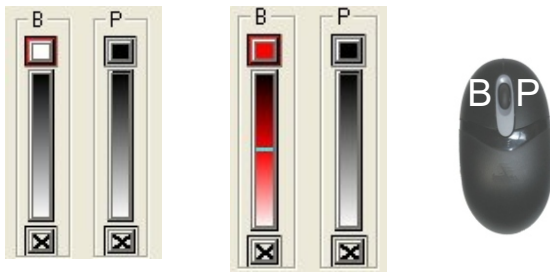
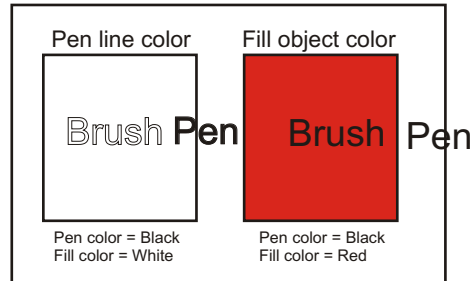
8. Apply: Apply the selected transformation to the selected objects or groups.

Note: The transformation tool measures the selected object, it is the measure of the box of the selected objects. Not recommended for text height.

Color Palette

Pen Color: The pen color or the edge of an object is what is cut out; it does not affect the fill color or color inside an object. (brush color).

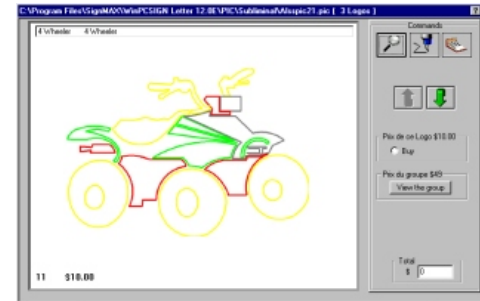
Fill Color: The fill color or color inside an object. (brush color).



Palette: By selecting an object and moving the mouse cursor on a color of the pallet, you will obtain a fill color if you press the left mouse button, and a pen color if you use the right mouse button.

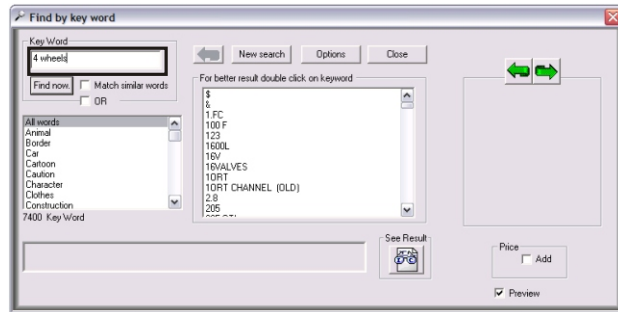


Color Box: Moving the mouse cursor over a color of the color box, you can select a pen or fill color for any selected object.

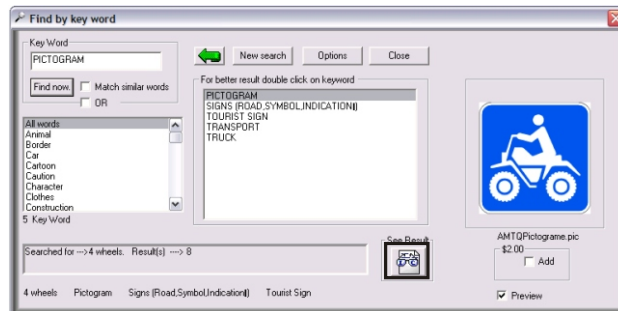


How to search for a logo.

Click the logo search icon. This opens the search tool menu.



Type in a Key Word window. Example: 4 Wheels

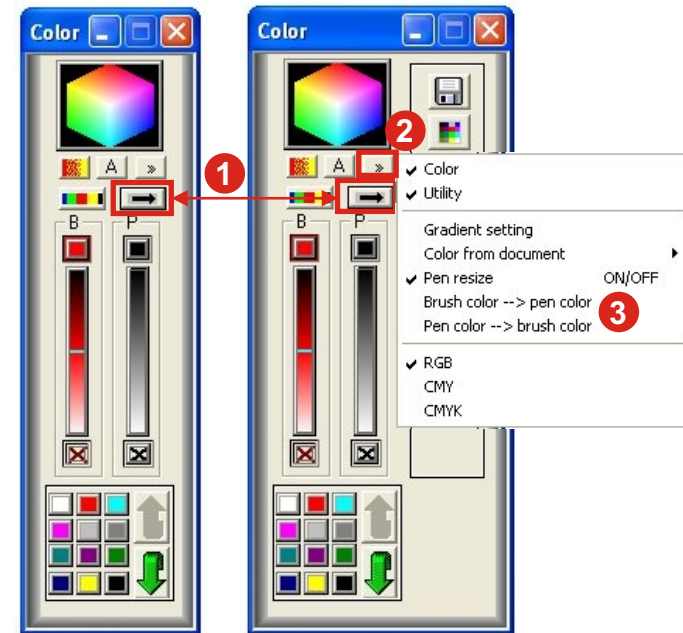


Click the See Result button to view the found logos. If you wish to buy click the BUY button.



Brush & Pen Slider: These bars show what colors are currently selected for your brush (fill) and pen color (border). Clicking the "X" boxes will make the fill color or the pen color invisible. "X" are colored in red to show that they are not visible.

Click on arrow to expand the color palette or to return the palette to its previous size, click arrow again.

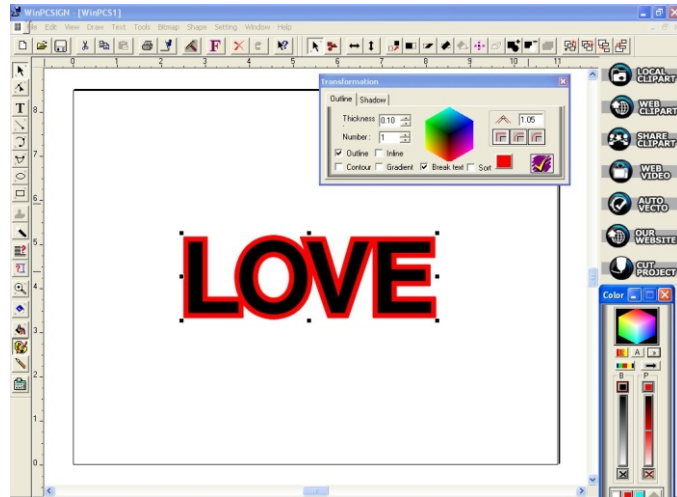


- 1 Allows to expand the color palette or to minimize the palette to normal size.
- 2 Allows to open an additional window of the color palette.
- 3 Allows to transform the outline colour of an object selected with the same colour as his fill colour.

Regrouped additional tools

Outline: From the Document Bar, Tools menu expand and select Outline.

The window transformation contains four tools, the first tool allows to create external and / or internal contours around a text or a logo. You can create one or more spaced external contours of adjustable thickness.



How to reach Web Video ?

Click the "WEB Video" button to open the www.sigmax.us forum web site, you need an active Internet connection.



The forum of the users is an important source of information and sharing. Multimedia training is accessible to users.



How to share logos and files?

Participate in the community of exchange of logos and works made with WinPCSIGN it is simple and rewarding to see the works appreciated by the other users. For this to make you have to use a Internet connection and WinPCSIGN software.

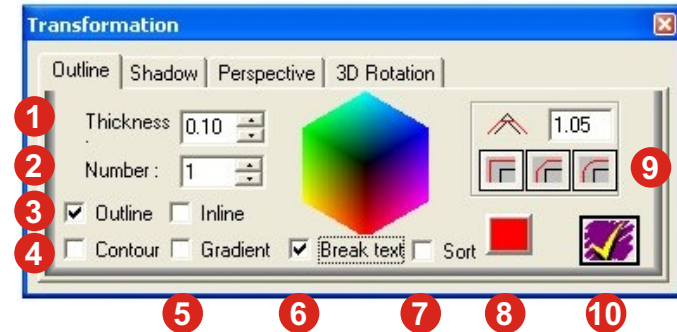
Click the "SHARE Clipart" button to open the universalscrapbook.com web site, you need an active Internet connection.



The first time when you use this service you have to create an user account by clicking the "Create account" button.

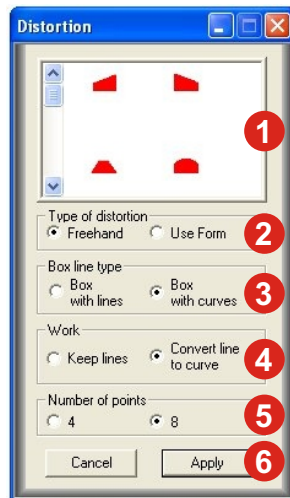
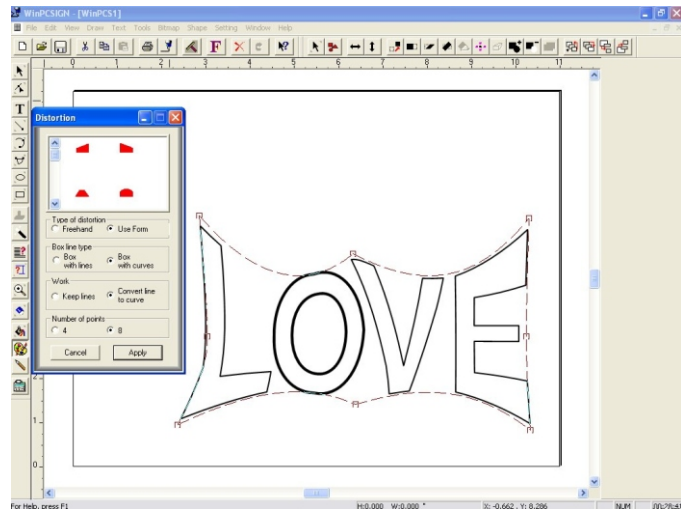
When your user account is created:

- Select in the screen the logo to be shared.
- Click the button "Share Clipart" to open the window Share
- The logo to be shared is visible the "Preview" window
- Attribute at least one tag label according to the fields of classification. A maximum of three tags can be attributed.
- Give a name to your logo.
- Optional description.
- Click the button "Share".



- Thickness:** Select the thickness of your outline. Always use a low value like 0.10 or 0.25. (0.25 = 1/4 inch)
- Number:** Select how many outlines you want.
- Outline / Inline:** Outline is towards the outside of the design object while inline is towards the inside of the design object. Remember that the number of inline contours is limited by the size of the object.
- Contour:** This function automatically welds the overlapped objects, select contour to make any overlapping outlines automatically weld together.
- Gradient:** Generate a color background made up according to the gradient of filling selected.
- Break Text:** This activated function separates the original text from the outline created when not activated, the initial text and outline created are grouped units and inseparable. You must break the text if you wish to create two or several outline of various thickness or different colours.
- Sort:** Arranges stacking order of the outlines generated in order to show the smallest object on top of the pile.
- Fill Color:** Displays the current outline color selected.
- Corner Style:** Select from three model styles of generated outline corners.
- Apply:** Apply your current setting to generate outline(s).

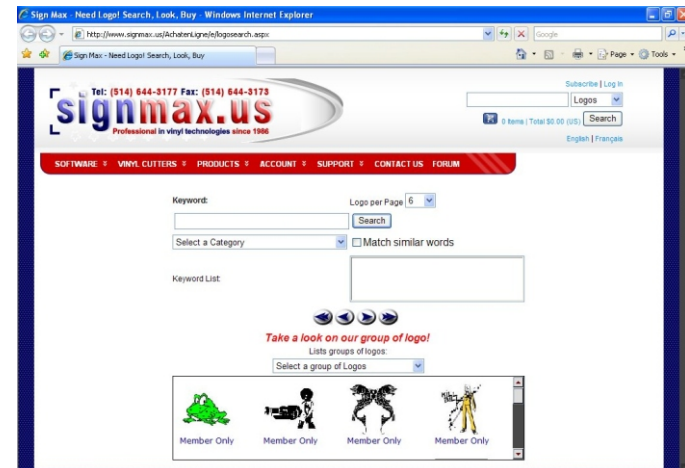
Distortion: From the Document Bar, Tools menu expand and select Distortion or from keyboard use (Ctrl+K) brings up a window with distortion templates to transform your selection.



- 1- Form Selection:** Select from preset distortion forms.
- 2- Type of Distortion:** Select "Free Hand" or "Use Form".
- 3- Box Line or Curve Type:** Select Box with curves, the selection with curves allows handling of curves.
- 4- Work:** Select to keep the lines or to convert the lines into curves.
- 5- Number of Points:** Select four or eight points. Four additional bounding boxes appear.
- 6- Cancel / Apply:** Click on Apply when you are satisfied or Cancel to close the distortion window without change.

How to reach Web Clipart logos.

Click the "WEB Clipart" button to open the signmax.us web site you need an active Internet connection.



Become member to download logos and fonts.
The site allows you to search for a logo by its name or a category.

Signmax.us Fonts & Logos Membership

Membership -> Membership subscription

Become a members by selectionning your membership option and by filling the form.
If you have questions about the membership take a look at your [forum membership](#) section or email us at membership@signmax.us

MEMBERSHIP OPTIONS

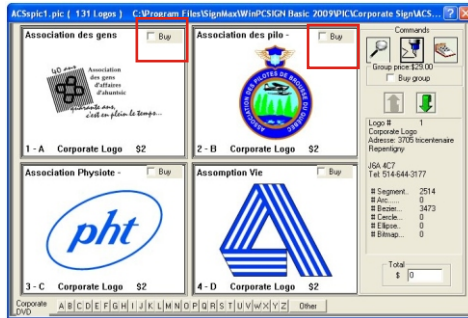
- ☒ 1 Year \$99 (us) -> [200 logos / month] -> [20 fonts / month]
- ☐ 3 Month \$49 (us) -> [200 logos / month] -> [20 fonts / month]
- ☐ 1 Month \$19 (us) -> [200 logos / month] -> [15 fonts / month]
- ☐ 10 Logos \$10 (us) -> [10 logos / month] -> [1 fonts / month]

Register your WinPCSIGN and get 3 month fonts & logos membership trial

OTHERS ADVANTAGES OF SIGNMAX.US FONTS & LOGOS MEMBERSHIP

Search & download logos only by clicking on	Membership discounts 50% On our Corporate Signs DVD 10% On all WinPCSIGN Software Upgrades 30% On all WinPCSIGN Software 30% On Formation CD's Look for this image:	Sign making expert One time each month of your membership. You can ask a question to our expert in signmaking.
---	---	--

Contents of the “Corporate Sign” AutoPro folder.



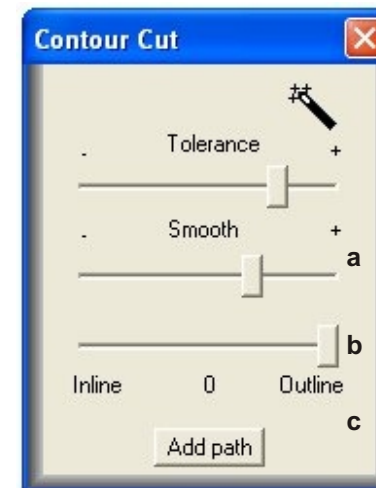
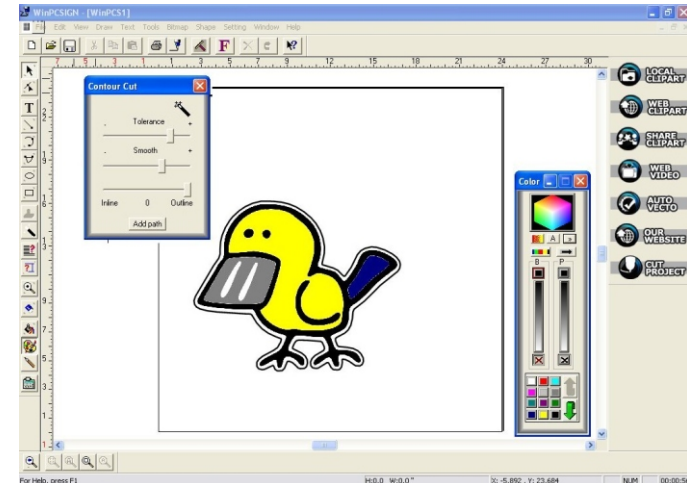
Check mark the Buy window and click the calculator button to go back to the “Corporate Sign” window and click the door button to exit to open the purchase via telephone.



By using the Internet you will receive by E-mail your logos



19- Image Contour: To create exterior or interior contour of an image allowing to cut the contour created.

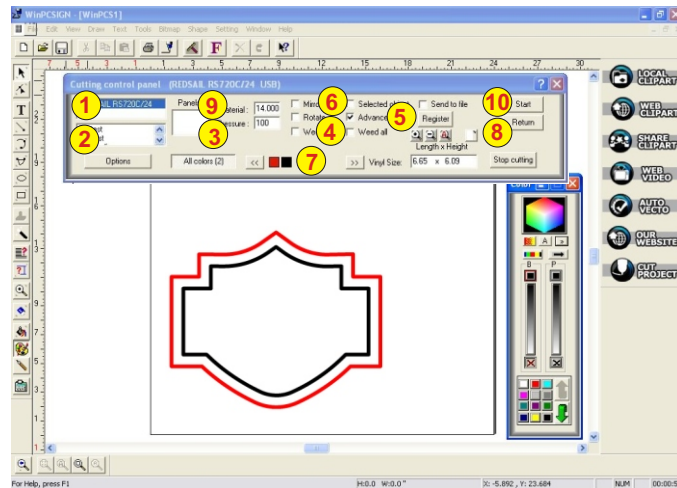


To use this feature:

- 1) Select the image to be outlined or inlined
- 2) Click the Contour Cut icon
- 3) Using the sliding button to:
 - a) Adjust the path tolerance,
 - b) Adjust the path smoothness
 - c) Adjust the width of outline or inline.
- 4) Click Add path.

More on Control Cutting Panel

To open the control cutting panel, click the "Cut Project" button or press F10 from your keyboard.



Allows to choose :

- 1 Cutter selection (if 2 or more available)
- 2 Cutting speed selection or pen speed**
- 3 Blade pressure if cutter has this function**
- 4 Weeding box activated or not
- 5 Movement of the cutter head in the end or at the beginning of the vinyl
- 6 Allows to cut by selection of 1 or several objects
- 7 Allows to cut objects by the color of their outlines
- 8 Allows to verify the vinyl alignment.
- 9 Effective vinyl width.
- 10 Start button to cut.

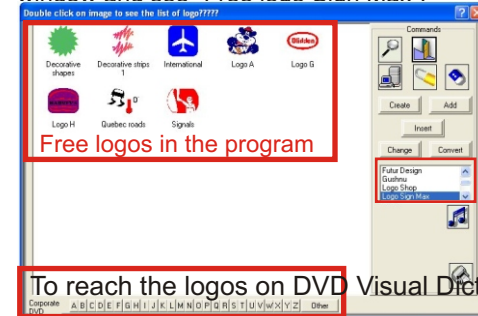
Chapter 4: Drawings & Logos.

How to reach logos.

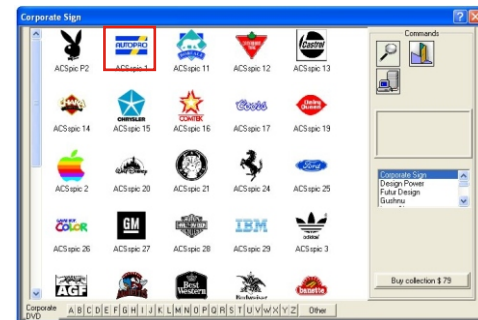


Opening a design from the "Local Clipart" button.

a) Click the "Local Clipart" button to open the clipart window and see "Free logo Sign Max".



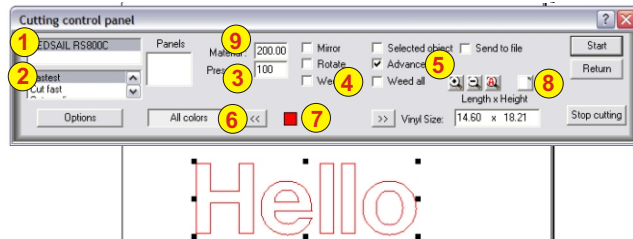
To see the available logos in the Sign Max store, use the down arrow and go to "Corporate Sign"



In the Sign Max store, select the "Corporate Sign" and click second icon at the top of the screen to see contents.

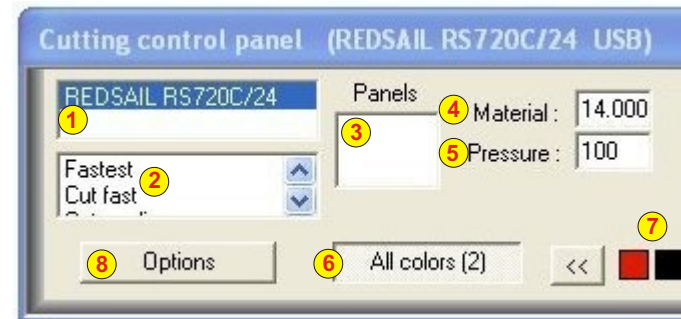
The transformation tool measures the selected object, it is the measure of the box of the selected objects.

If your cutter is configured, you can cut now. For this prepare your cutter, power ON, vinyl and...
Click the blade icon which opens the cutting control panel



Allows to choose :

- 1 Cutter selection (if 2 or more available)
- 2 Cutting speed selection or pen speed**
- Configure the speed on the panel of the cutters.
- 3 Blade pressure if cutter has this function**
- Configure the pressure on the panel of the cutters.
- 4 Weeding box activated or not
- 5 Movement of the cutter head in the end or at the beginning of the vinyl
- 6 Allows to cut by selection of 1 or several objects
- 7 Allows to cut objects by the color of their outlines
You can modify the outlines colour by selecting objects and to apply the function to use the filling colour as for the outlines colour.
- 8 Allows to verify the vinyl alignment.



1-Cutter selection: Select the cutter if 2 or more available.

2-Cutting speed: Cutting speed selection or pen speed**
- Configure the speed on the panel of the cutters.**

3-Panels: Panels are generated automatically when the width of the working page containing an object to be cut exceeds the width of the configured material.

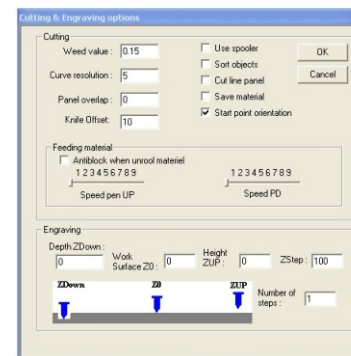
4-Material: Effective cutting vinyl width or maximum cutting width allowed, you configure a working screen bigger than the maximum cutting page size, WinPCSIGN generates a cutting panel on the screen.

5-Pressure: Blade pressure if cutter has this function**
- Configure the pressure on the panel of the cutters.**

6-All Colors: When this button is selected, WinPCSIGN cut all the pen line colors on your working page.

7-Color Bar: Shows all the object colors you can cut on your screen, allows to select one or several colors to be cutted.

8-Options: Cutting parameters as weed value, curve resolution, panel overlap, knife offset, use spooler, sort objects, cut line panel, save material and start point orientation.



Section 2 Advance options



10- Selected object: Displays and cuts one or many selected objects. Select object(s) before you checkmark "Selected object"

11- Advance: When cutting is done your page will go out automatically. Unselect this function if you have to use different tools on the same page or if your work is in registration mode.

12- Weed all: Cut a square around your drawing, useful to cut vinyl stickers.

13- Mirror: Mirror function can be done inside the software. Selected from the Control Cutting Panel, this function mirrors your entire work. Useful when you are cutting iron-on transfer material.

14- Rotate: Rotates your entire work.

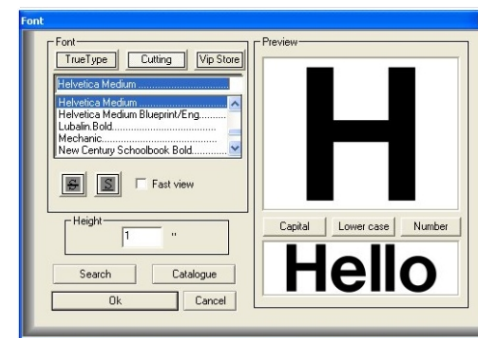
15- Weeding: Cut a square around your drawing, useful to cut vinyl stickers. Can be adjusted from "Options".

c) Type in "Hello", the text should appear on your working screen.

Step 8

By means of the mouse click the selection tool in the tools bar at your left, click the text which you typed, eight small black boxes appear around your text; this indicates that the object Hello is selected.

To change the font or the height of the font, click the icon **F** at the top of your working screen.



Hello 3.000 inches

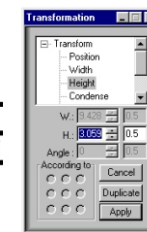
The height of the font is defined with the letter N capital letter of the alphabet. This menu allows to use the cutting fonts and the TrueTypes and Adobe fonts present in your computer. Furthermore it allows to change height.

Transformation Menu

Press the letter H of your keyboard and compare heights.

Hello

Transformation measure the box, round letters are bigger.



3.059 inches

Two working modes :

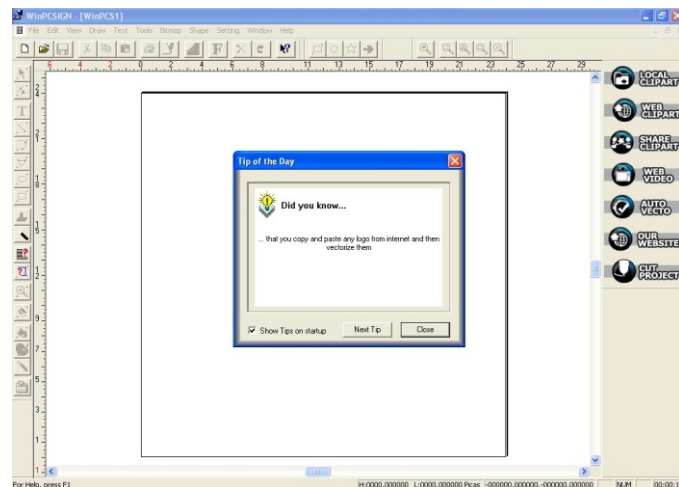
To configure the working page according to the dimensions of the sign to be realized

To configure the working page according to the width of the vinyl used to avoid losses, to choose a arbitrary length page of 2 or 3 times the width of the vinyl.

Not to forget to choose unit of measure.

Step 5

A new screen appears; this is the “working screen”.



Step 6

Click the Close button to close the “Tip of the Day” window, you are in the working screen..

Step 7

Let's add a simple text

a) From the Tool Bar on the left side of your working screen, select T, the Text icon.



b) Once selected, the T icon becomes depressed; move the mouse on the working page (the cursor is similar to a capital I), and click on the place where you wish to begin the text.

Section 3 Media alignment



17- Cut Project: Verify your cutter, if everything is correct click the “Cut Project” button.

18- Return: Closes the Cutting Control Panel without cutting your project.

19- Stop cutting: Click this button to stop cutting your project before it is finished. May not stop your cutter immediately.

20- Vinyl alignment: Allows to verify the vinyl alignment.

21- Register: For the cutters provided with optical cropmarks detection, or cutters using either a mechanical registration device or laser alignment.

22- Send to file: This function is for the technical support.

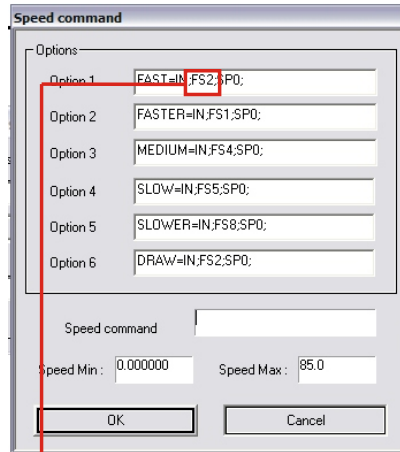
23- Zooms: Zoom action over the working page, zoom in closer, zoom farther and zoom all.

24- Width Height : Measure objects to be cut

25- Help: Shows help on the Cutting Control Panel.

Changing speed parameters:(if cutter has these functions)

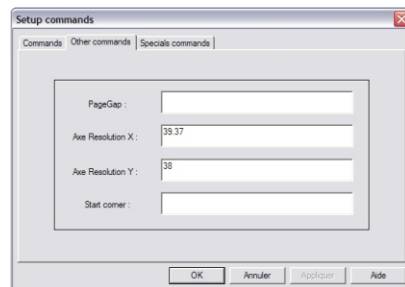
You can adapt to your requirements the speed categories by changing values FS1 to FS8. By clicking the button Velocity you access to this Speed command menu.



Attention:
Before making changes made a screen capture of these configuration parameters.



By modifying the factors of X axis and the Y axis you can calibrate the cutter. This factor 39,37 represents 1000 steps per inch and factor 40,00 represents 1016 steps per inch. Use 2 decimals. Verify if your cutter is configured 1000 or 1016 before to change settings.



Chapter 3: Making your first project.

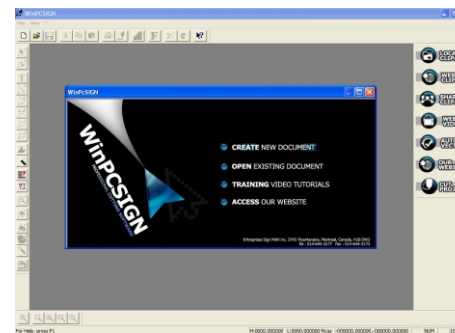
Step 1



Double click the FunTime icon on the Windows desktop.

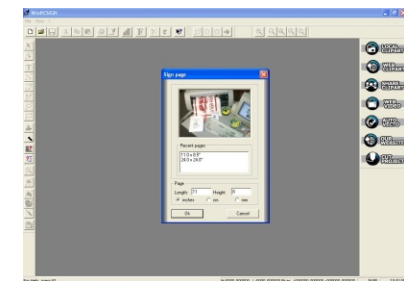
Step 2

This screen should appear, double-click "CREATE"



Step 3

A new screen will appear where you can select your page size or define a new working page and choose metric or English units. (You can change the dimensions of your working page anytime.)



Step 4

Select the page size you wish to use and select "Ok".

For this project select the landscape size 24" x 24" then select "Ok".