

Installation & QuickStart Manual

FlexiStarter 10.5 & HW330 cutting plotter



Flexi 10

Contents

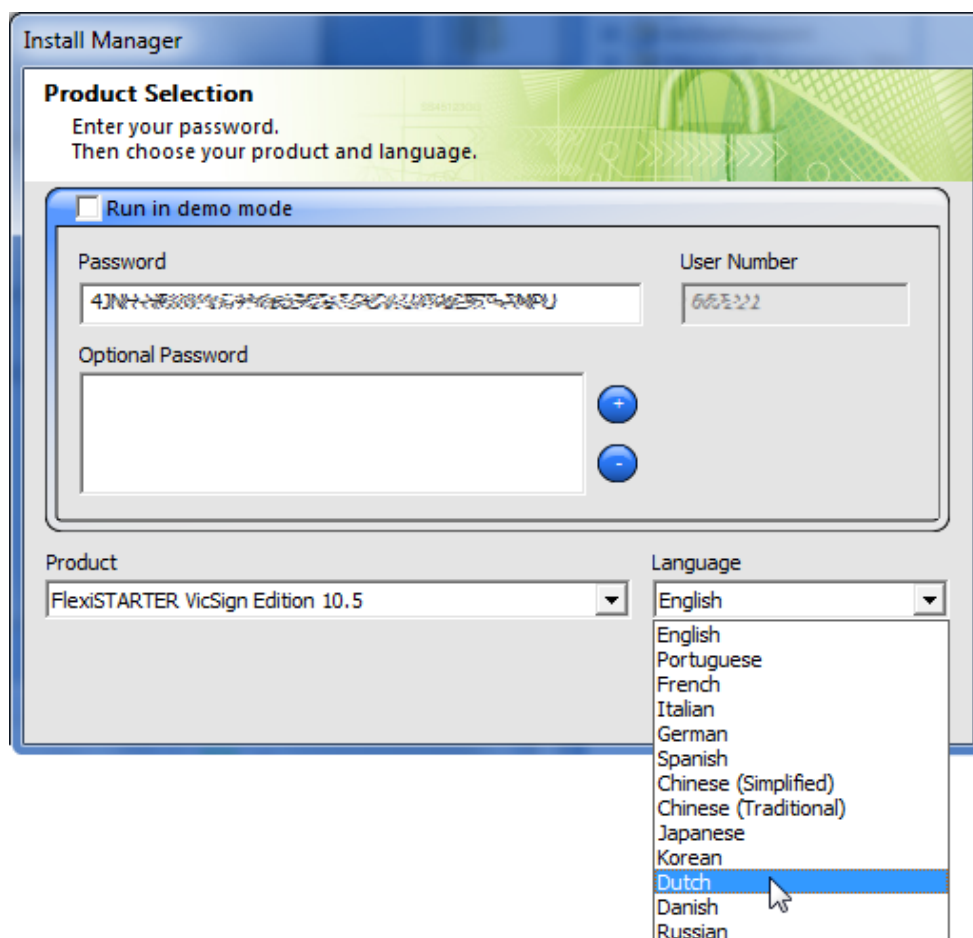
Installation.....	3
Installation of the software: FlexiStarter	3
Installation of the hardware: HW330 cutting plotter with USB cable	4
HW330 cutting plotter operation.....	5
Placing the vinyl roll	5
Online / Offline mode.....	5
FlexiStarter	6
Full FlexiStarter Manual	6
DesignCentral	6
Questions?.....	6

Installation

Important: it is required to install the software with a computer account that has local administrator privileges, and has an internet connection.

Installation of the software: FlexiStarter

1. Insert the CD-ROM and double click the file *Autorun.exe* in the root directory.
2. At the language selection window, choose English or the language you want.
3. Click *Next*.
4. Click *I accept the terms of the license agreement* and click *Next*.
5. Click *Next*.
6. Enable options *Flexi Starter Edition 10.5 VicSign* and *SafeNet Sentinel System Driver*, click *Next*.
7. Click *Next*. FlexiStarter will now be installed.
8. After a few moments a warning will popup about the dongle driver. Make sure the USB license dongle is *not* inserted in the computer and click *OK* to continue.
9. Enter the Password. When the password is entered correctly, select product *VicSign FlexiStarter Edition 10.5*. Important, change the *Language* to *English* or the language you want! Click *Done* and then click *OK*. The installation is now complete.



10. Click *Finish* to completely close the installation wizard.

11. Plug the USB license dongle into the computer and wait until the computer has recognized and installed it.
12. Start the *FlexiStarter Edition 10.5 VicSign* shortcut on the Desktop. Follow the instructions to activate the USB license dongle. If you do not have an account at SAI, follow the instructions to create a *new account*. When you can see the *activation code* on screen, copy it and paste it into FlexiStarter.
You need an Internet connection and an email address. When activation is complete the program will start.
13. After the program starts, you will see the DesignCentral toolbar in the top right area. Change the values to 100cm wide and 28cm high. Then click on the arrow *Additional options* (right of the term Custom), click *Set as default*.
14. Now close FlexiStarter.

Installation of the hardware: HW330 cutting plotter with USB cable

1. Download the driver:
If you have a **32** bit operating system:
<http://downloads.rebo.nl/drivers/HW330USB%20driver%2032bit.zip>
If you have a **64** bit operating system:
<http://downloads.rebo.nl/drivers/HW330%20USB%20driver%2064bit.zip>
2. Make sure you have **not** connected the cutter to the computer.
3. Locate the .zip file on your harddisk and *extract / unzip* it.
4. Start the file *setup.exe* in the *extracted / unzipped folder*.
5. Follow the *wizard* to install the driver.
6. Connect the cutter to the computer with the provided *USB* cable.
7. Wait until Windows has *recognized and installed* the device. This takes up to 1 minute time.
8. On the desktop or in the Windows Start menu, right-click *Computer*, and click *Manage*. A new window will appear. In the left menu, click *Device Manager*. Under the heading *Ports* an *Atmel EVK1105 Virtual Com Port* or *Stellaris USB serial port* appeared. Behind the device name is *COM2* for example. Remember this number. [*]
9. Start the *Production Manager 10.5* shortcut on the Desktop.
10. *Add a Setup* window will appear. Select model *HW330*. Click *Next*.
11. Under *Port*, select the COM port number here from step 8, don't change any other settings and click *Finish*. The cutter is now added.
12. Right click on *HW330* and click *Default Job Properties*.
13. At *Media Dimensions*, change the *width* from 42,000 to 28,000 and the *height* of 1524.000 to 100,000.
14. Click *Apply* and then *OK*.
15. Start the *FlexiStarter Edition 10.5 VicSign* shortcut on the Desktop..
16. Place a text on the screen and go to *File, Cutting / Plotting* and *Send* it to the plotter.

* Troubleshooting:

Is the HW330 cutting plotter not properly installed by Windows 8? The cause of this is probably Microsoft driver signature enforcement, which doesn't allow unsigned 3rd party drivers to be installed. To disable this, ask your IT system administrator or Google disable driver signature enforcement and your Windows version. When this is disabled, start over at step 4 and to complete the installation.

HW330 cutting plotter operation

Placing the vinyl roll

Push the lever at the right rear of the HW330 down, the pressure rollers are now going up: the vinyl can be placed.

Place the vinyl roll in the roll holder in such a way that the vinyl comes off the roll at the top, on the same height as the cutting head. Make sure the vinyl goes underneath the metal bar near the roll holder. Push the vinyl forward, underneath the pressure rollers. Pull the vinyl roll with two hands at the ends of the vinyl and make sure the vinyl roll is neatly placed and in straight position. If the vinyl is correctly placed, pull the lever on the right rear of the HW330 up, the pressure rollers go down.

Online / Offline mode

Turn on the HW330 with the red ON/OFF button on the left side of the machine. When it is switched on, the speed (Speed) and the blade force (Force) are on the display. The plotter is now online and can receive commands from the computer.

To move the roll of media using the buttons on the cutter, press the red button Offline / Pause. Now you can move the vinyl with the arrow keys. In this mode the display says Move X Y. The cutter cannot receive any commands from the computer now.

When finished moving the vinyl, press the Origin button to put the cutter in Online mode.

FlexiStarter

Full FlexiStarter Manual

On the installation CD-ROM of the FlexiStarter Program is an extended manual.

Using Windows Explorer, go to the folder on the CD-ROM and select the folder "Read me files".

This contains the file **Flexi help.pdf** with the full software manual.

Given the amount of information in this document we would like to point out three chapters that form the basis for creating a document.

Chapter 11 – "Working with text"

Chapter 10 – "Working with Shapes"

Chapter 19 – "Cutting your design"

DesignCentral

In FlexiStarter the DesignCentral toolbar fulfills an essential role in the design process, when you have closed this toolbar accidentally, you can recover it by clicking menu *View > DesignCentral*.

Adding extra fonts

The fonts available in FlexiStarter are the same fonts that are installed in Windows. To add a font, install it in the Windows Control Panel > Fonts window, then restart FlexiStarter.

Set default font

In order to always start a standard text with a specific font and size:

- Click the Text tool (T). Do not click on the worksheet yet.
- In the DesignCentral toolbar in the upper right area, select the desired font you want as default. Under the font, select Italic, Standard or Bold. Below that is the font size. Select the desired height, for example 10cm.
- On the bottom of the DesignCentral area there is a small arrow to the right, click on it and first click Define, then open it again and select Automatic.

Questions?

If you have any questions please call us or send us an e-mail.

We wish you much ease in using the FlexiStarter program with the HW330 cutting plotter.

Technical support e-mail: support@rebo.nl

Phone: +31 35 60 169 41

General questions e-mail: info@rebo.nl

Website: www.rebo.nl

