

Instruction videos Rebo printers

Click below for detailed instruction video's about your label printer

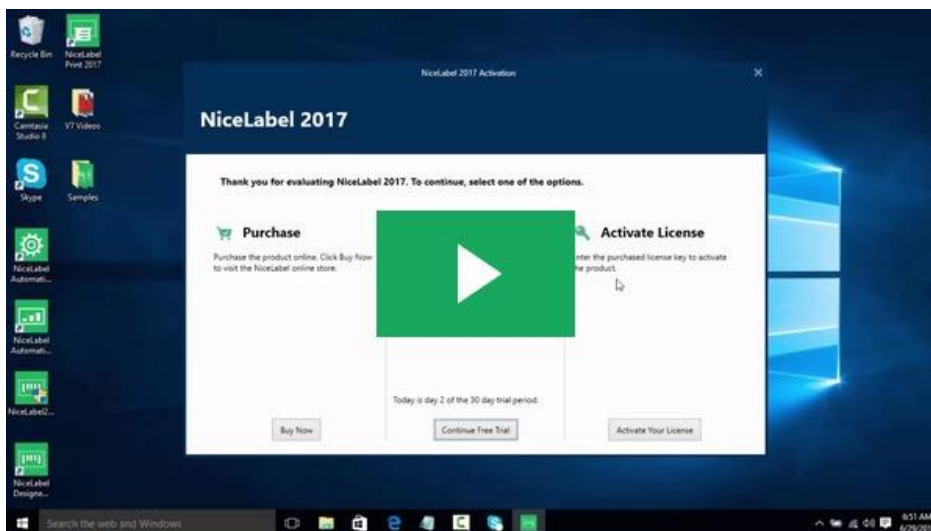


Training videos NiceLabel 2017

Installation and Activation

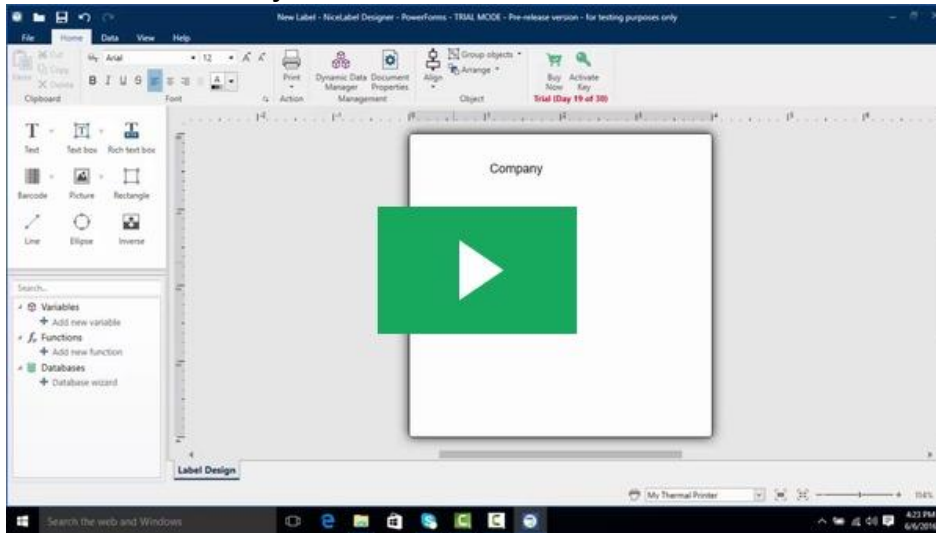
Learn step-by-step how to install NiceLabel 2017 software on your computer:

- See what options are available during the installation process
- See how to activate the software at the end of installation
- See how to switch between versions of the software



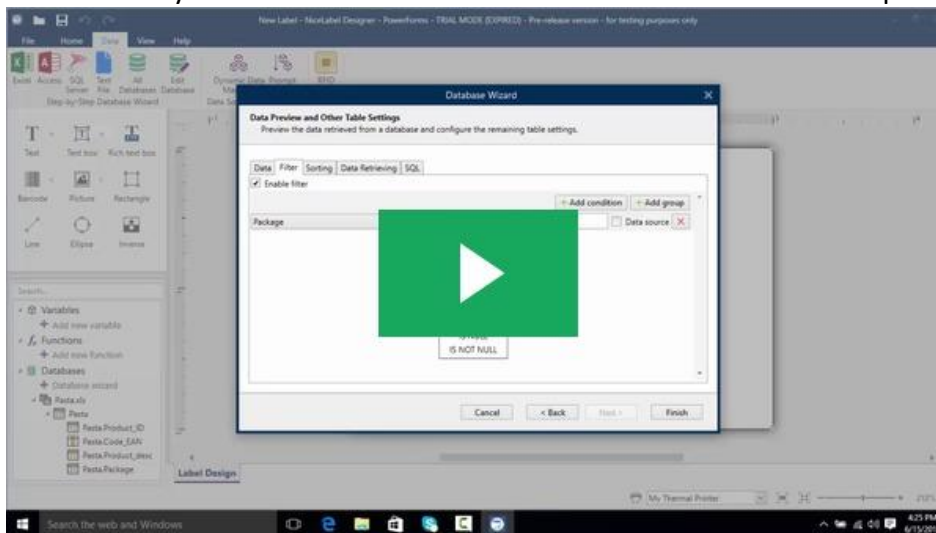
Learn Label Design

Explore basic label design and design your first label. This video will present most common objects and how to add them to the label.



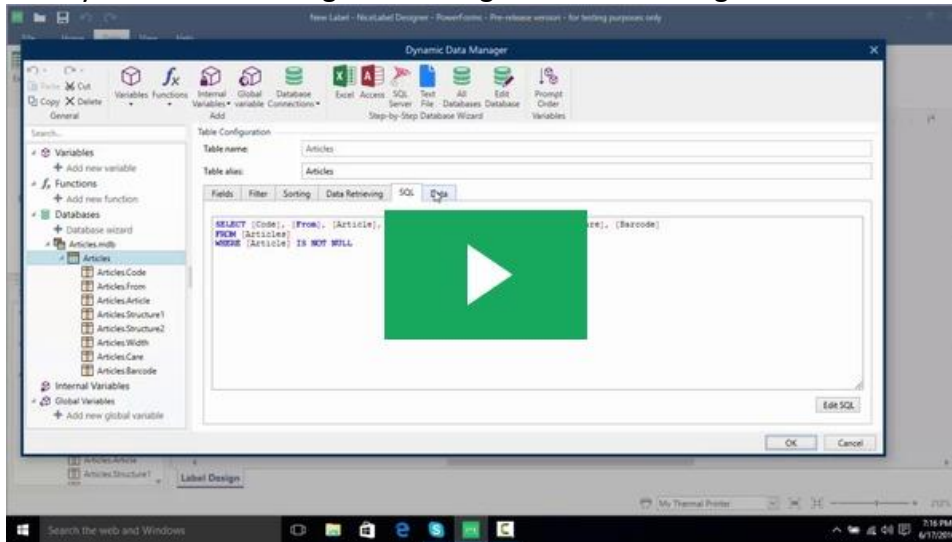
Connect to a database (Printing from Excel)

In this video you will learn about how to connect label to Excel and print from it.



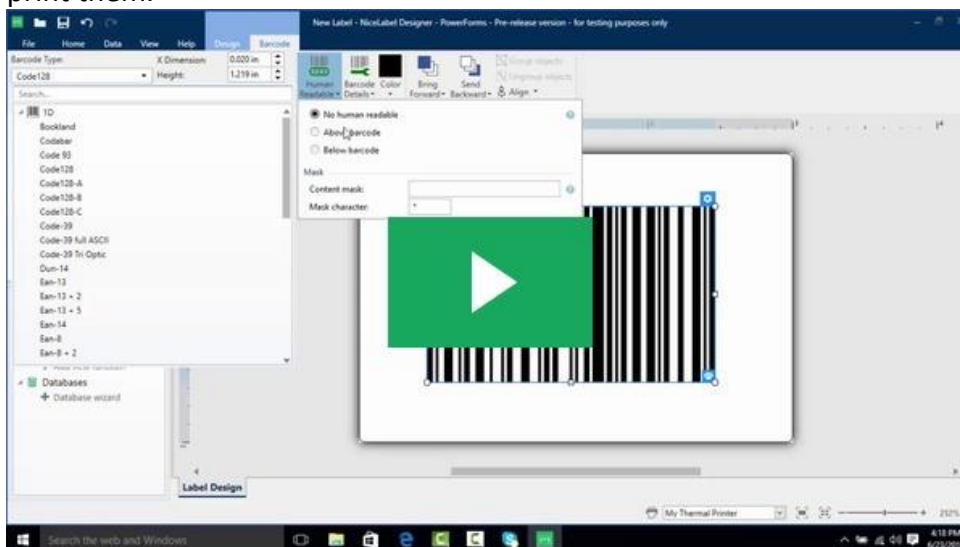
Introduction to Dynamic Data Manager

In this video you will learn how to connect a database such as Access to our label and then use Dynamic Data Manager to manage the data coming in.



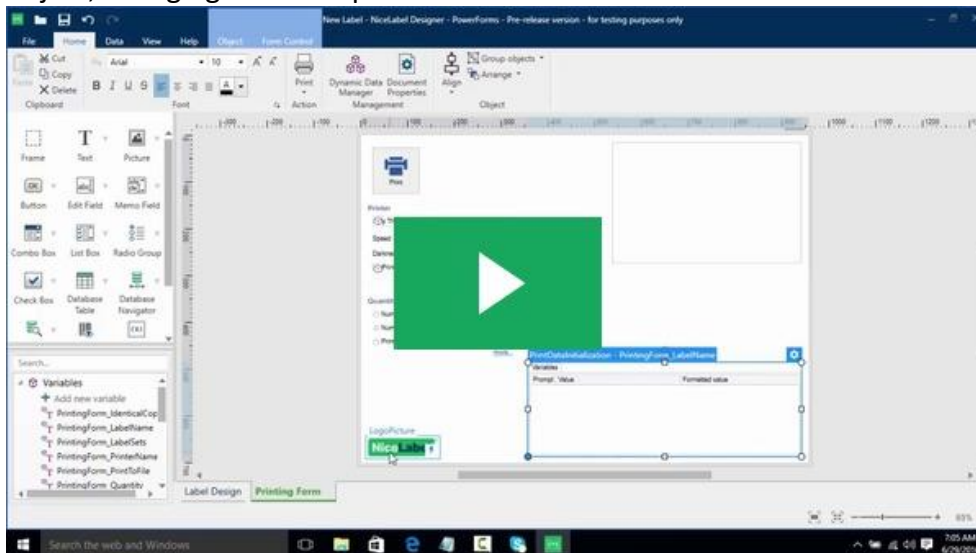
Print barcodes

In this video we will take a look at the different types of barcodes in NiceLabel and how to print them.



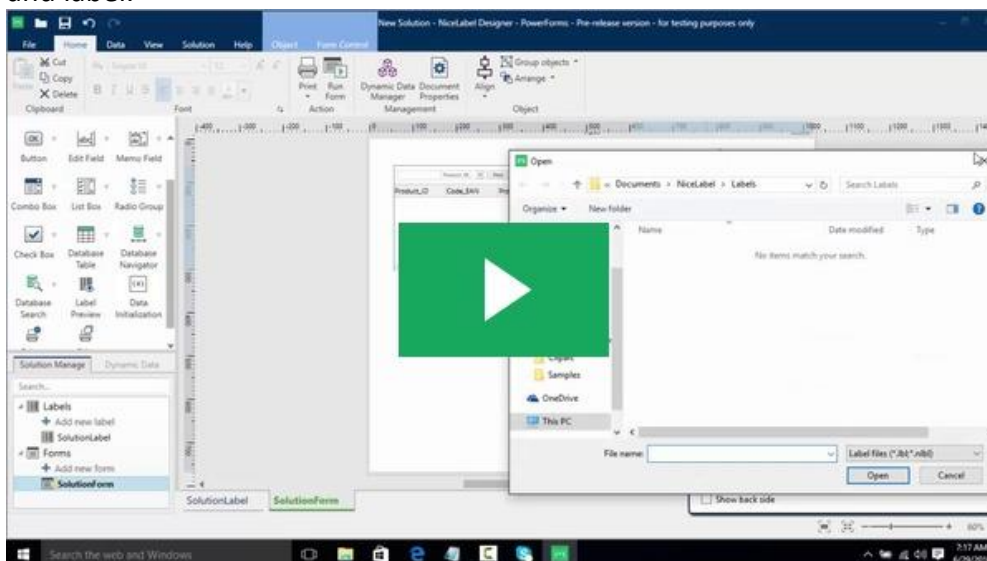
Design print form

In this video you will learn how to design your print form in NiceLabel Designer by removing object, changing sizes and positions.



Design first solution

In this video you will learn how to create your first solution which is a combination of a form and label.



Need more help?
Call us at +31356016941



Support Connection

Enter your 6-digit code

Start Download

How It Works

[Click here for Rebo online support](#)



See the problem, solve the problem.

Rescue Lens is bringing the power of live interactive video to our online support center. Download the free app and allow us to resolve any ambiguities or to spot certain malfunctions.

